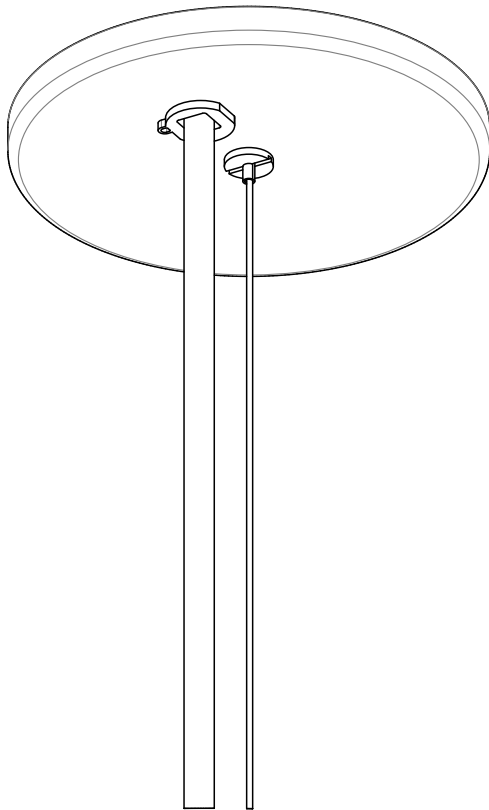


Flat Canopy

14273 rB

Round
Cable Gripper
Low Voltage



CAUTION:

Before starting, turn off power
at main circuit panel.

ADVERTENCIA:

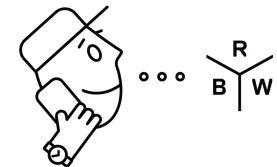
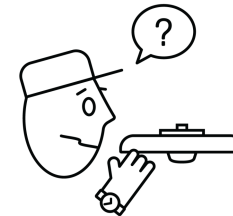
Antes de comenzar la instalación,
apague la corriente en el tablero
principal.

ATTENTION:

Coupez l'alimentation avant de
procéder à l'installation.



Calling for backup? Scan above
to contact our team.



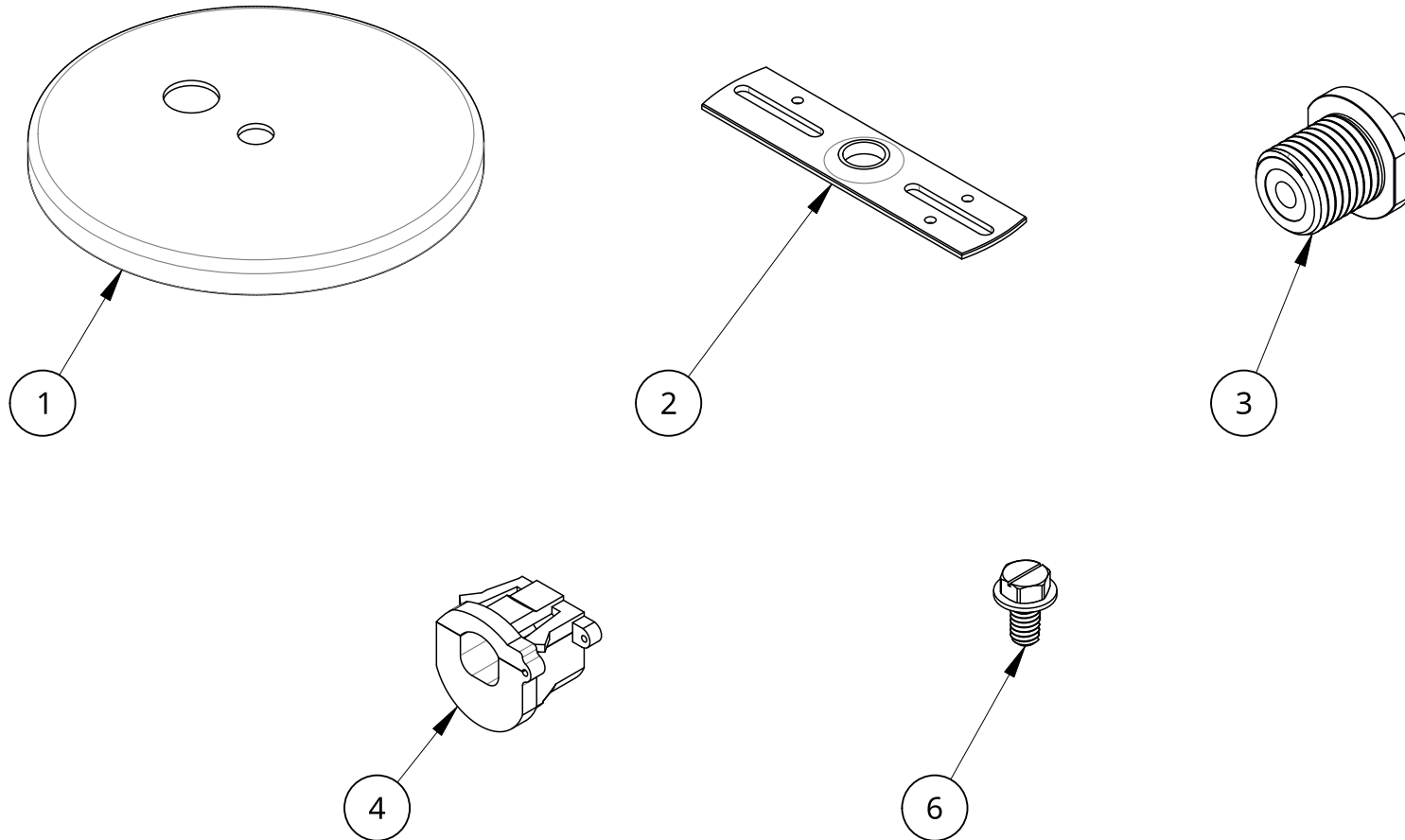
www.RBW.com

+1 212 388 0399

support@RBW.com

© RBW Studio LLC, 2013, 2020

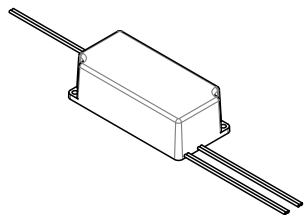
What's Included: Part Configurations May Vary



Item	Qty	Part number	Description
1	1	10795	Canopy CP08, White
2	1	10782	CrossBar #178
3	1	15-14IP-KFT-T 2	Gripper for 3/64" - 1/16" Cable. 1/4IPS thread
4	1	1853	Heyco Strain Relief 1853
5	1	92597A800	8-32 x 5/16" Electrical Grounding Screw



Driver dimensions and location may vary, consult your order confirmation for details.



* Fasteners not included

Crossbar #39

Canopy CP08, White

1/4"IPS Gripper for 3/64" & 1/16" Cable

Heyco Strain Relief 1801

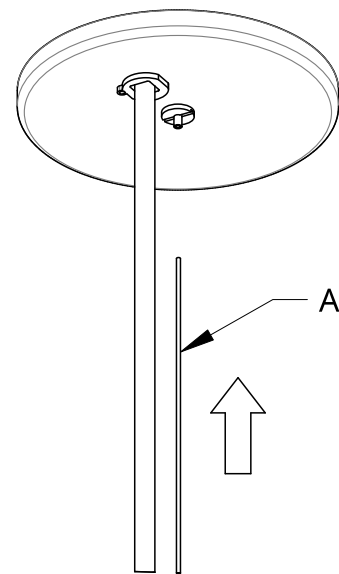
Power Cord

Installation - Canopy

1. Screw Crossbar into junction box or desired mounting location with appropriate fasteners.
2. Snap Heyco Strain relief over Power Cord at desired length.
3. Snap Heyco into Canopy and connect Red (+) and Black (-) leads to low voltage leads from externally located driver.
4. Thread Gripper into Crossbar through center hole of canopy.

Refer to recommended fastener table for use without a Junction Box.

Surface	Recommended Fastener
Stud-Backed Drywall	#10 Drywall Screw
Hollow Drywall	Molly or Toggle Bolt
Concrete Slab	10-24 Expanding Anchor
Wood	#10 Wood Screw



Aircraft Cable

Installation - Aircraft Cable

5. Trim Aircraft cable approximately 3" longer than desired hang height.
6. Insert Aircraft Cable 3" into 1/8"IPS Gripper and allow fixture to hang freely.
7. Congratulations! End of guide.